

THE LOG

SEAMEN'S CENTER of WILMINGTON Incorporated

PORT OF WILMINGTON • P.O. BOX 405 • WILMINGTON, DE 19899 • (302) 575-1300 • www.scwde.org

A NON-PROFIT ORGANIZATION

SUMMER 2023

Thank you to our 2022 Flagship Sponsor 

Volunteers are the Backbone of America

By Christine Lassiter, Executive Director



Being a volunteer driven organization we at the Seamen's Center of Wilmington understand the value of volunteers. Without volunteers SCW cannot accomplish our mission of greeting and assisting seafarers, something they so desperately need.

Pre-pandemic, the SCW corps of 40-45 volunteers averaged 3,000 volunteer hours a year. In 2022 the volunteers and hours were half that. The reduction in volunteer hours is due to two main factors: 1) seafarers were still struggling to gain shore leave and 2) some volunteers were unable to return to volunteering after the pandemic.

Based on articles in Philanthropy News Digest from April 23, 2019, and April 23, 2023, if SCW had to employ workers for the 3,000 volunteer hours in 2018 it would have cost the Center \$76,290.00 at a rate of \$25.43 (including fringe benefits). In 2022 with half of the volunteer hours at 1,500 hours but now a rate of \$31.80 (including fringe benefits) it would have cost the Center \$47,700.00.

"It is impossible to place a true dollar amount on the immeasurable contributions of time and effort that volunteers give freely to communities around our nation, whether during times of national disasters, or in daily acts of service," said President and CEO Akilah Watkins, of Independent Sector. "We do know that without their empathy, bravery, and willingness to risk their lives to ensure residents continued to receive vital services throughout the COVID pandemic, many in our communities would not have fared as well. Volunteers are the ties that bind us as a nation and deserve our highest praise" Philanthropy News Digest.

This is true; seafarers would not have fared well without SCW's community of volunteers during COVID. SCW was their link from ship to shore. Nor could we have added the Seafarer Vaccination Program, a service that enabled seafarers to get home to their families.

As the State of Delaware enters a new public-private partnership (P3) with Enstructure, LLC to operate the Port of Wilmington and expand operations to Edgemoor, there's no doubt ship traffic and cargo will steadily be increasing. There will be many changes coming to the ports in Delaware and in turn to the Seamen's Center of Wilmington. As we face these new challenges it is going to be critical that we expand the SCW Corps of Volunteers.

Most of our volunteers have had a long career at the Center – a testament to the joy they find in our mission and the seafarers they encounter from around the world.

Together we can be the positive change. Please consider helping a stranger in a strange land.

We need your help on our volunteer crew. To learn more about joining our crew contact Christine Lassiter: Classiter@scwde.org (302) 575-1300 ext. 103, or visit our website: www.scwde.org.

THE LOG

SEAMEN'S CENTER of
WILMINGTON Incorporated

PORT OF WILMINGTON
P.O. BOX 405 • WILMINGTON, DE 19899
(302) 575-1300
www.scwde.org
Email address: scw@scwde.org

Board of Directors

President

Lisa B. Himber

Board Members

Joe Cruise

John J. Deemer

Michael L. Hershey

David Lennon

Kelly A. McCandless

Kherun Merchant

Christopher M. Rowland

Lisa A. Stapleford

F. L. Peter Stone, Esq.

Executive Director

Christine Lassiter

Bulletin Board

Follow SCW on Social Media:



Facebook:

<https://www.facebook.com/SeamensCenterWilmington/>

Twitter: @SeamensCenterDE

<http://www.twitter.com/SeamensCenterDE>

Instagram:

<https://www.instagram.com/seamenscenterdelaware/>

LinkedIn:

<https://www.linkedin.com/company/72178387/admin/>

YouTube:

<https://www.youtube.com/watch?v=ObYQ06rQyPQ>

Request for member e-mail addresses



If you feel like you have not heard from SCW in a while, that must mean we do not have your e-mail address. In an effort to be good stewards of your money and the environment we are asking you to share your e-mail address with us; in return we promise your information is never shared, and not to flood your inbox with junk.

Being able to share with you through e-mail and other social media outlets allows SCW to keep you updated with what is happening here and with seafarers.

If you prefer not to share your email, then please "like" us on Facebook and/or follow us on Twitter, LinkedIn, or Instagram.

Thank you for your continued support of our mission.

Please fill out the enclosed envelope to share your e-mail with us or contact us at: scw@scwde.org.

***A special thank you to our sponsor
for this issue of The Log***

***Happy to support the
important work of the
Seamen's Center of Wilmington***



Serving the Eastern United States Ports

(800) 542-1542 or (610) 595-2100

www.westernfumigation.com

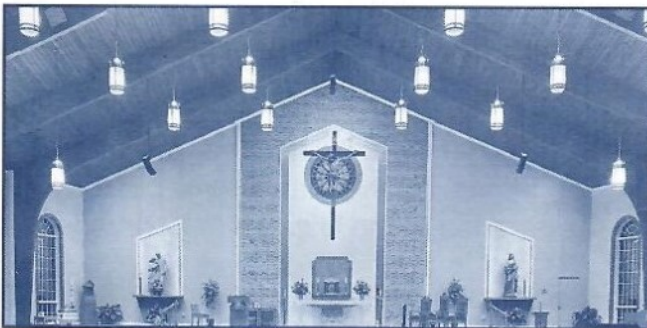
Sea Sunday to be celebrated at area churches

September 17, 2023
(Or a date of your choosing)

Celebrate, pray, and remember the labor of seafarers that supply each of us with the goods and food we enjoy in our daily lives.

Appropriate prayers and hymns to use in your service are available on our website at www.scwde.org.

Information about Sea Sunday will be mailed to area clergy this summer.



Save The Date!



Join us for our
Last Bash of Summer
fundraiser

September 12, 2023
4:30 – 7:30 p.m.

Docklands Riverfront

110 S. West Street
Wilmington, DE 19801

Good Food, Good Friends, Good Fun

GREAT RAFFLE PRIZES

SCW's Famous and Premier Raffles

Contact Christine Lassiter at
CLassiter@scwde.org or
302-575-1300

for sponsorship and ticket information
or to donate to our raffles.



Happy Birthday from Afar

It's 91 degrees outside and SCW is delivering ice skates

The staff and volunteers at the Seamen's Center experience a unique view of the world each day when they assist the international crews of cargo ships who bring goods to the ports in Delaware.

The seamen don't only dock at berths on the Delaware River with industrial and agricultural products, they also arrive with personal challenges: being strangers in a strange land; longing for their families thousands of miles away; and sometimes worrying about political situations at home.

These days Ukrainian seafarers, who crew on many ships that stop in Delaware, are naturally worried for the safety of their families.

When Captain Pavlo Vasylyev docked the M/V Dream at the Port of Wilmington, it marked his first visit to the United States. While SCW Executive Director Christine Lassiter said the Ukrainian captain was happy to learn about the services the center could provide for his crew, his visa restrictions didn't allow him to disembark with Dream crew members and get SCW transportation to shop for personal items or family needs.

Lassiter recalled Captain Vasylyev was reluctant to request help to get what he needed, but with gentle prodding he admitted to wondering if someone could find ice skates for his daughter's birthday. The captain then shared the story of his family's hardships after the invasion of the Ukraine in February 2022.

First, Vasylyev's wife and daughter were displaced from their house, but later, thanks to help from strangers and organizations like the Red Cross, the family was evacuated to Elche, a small town in southeastern Spain.

Vasylyev told Lassiter that the first sense of normalcy his daughter found in Spain, was being able to continue figure skating lessons in Elche. So he asked SCW if he could get ice skates for his daughter, Alisa, in time for her 9th birthday on July 5.

That's when Lassiter reached out to a friend of SCW, Lois Rulli, whose daughter Anna ice skates. They and their friends obtained two pairs of gently used skates that Captain Vasylyev was able to tell Alisa she was getting in a few months when he returns home.

"The love this father had for his daughter could not be contained," Lassiter said. "His excitement to 'give' her figure skates on her birthday was heartwarming."

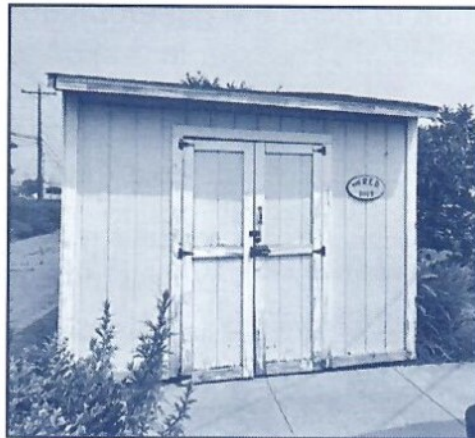
It's a story at the heart of the Seamen's Center of Wilmington: While cargo ships link nations with trade goods, the center connects seafarers with good people.



Calling all Boy Scouts looking for an Eagle Project

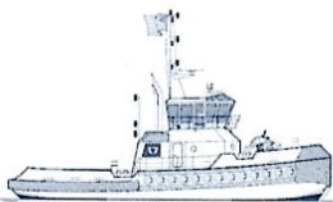
SCW is in need of a new shed. We feel this is the perfect Eagle Scout Advancement Project.

If you have, are, or know of a scout that is interested in this project, please contact **Christine Lassiter** at **CLassiter@scwde.org** or **(302) 575-1300**.



Thank you to our tug boat sponsors!

Proud Sponsors of the Tug Boat Cruise Seamen's Center of Wilmington Incorporated



AutoPort, Inc.
CMS Transportation, Inc.
Delaware River Stevedores, Inc.
Diamond State Port Corporation
Dole Fresh Fruit Co.
GT USA Wilmington, LLC.



Knotts, Inc.
Leonard's Express
Maritime Exchange for the Delaware River and Bay
Naaman's Wine, Spirits & More
Patio Printing
Pilots' Association for the Bay and River Delaware
Ports of the Delaware River Maritime Trade Association (PMTA)
Western Fumigation
Wilmington Tug

SCW Continues to Need Your Support

SCW has been extremely blessed to receive two grants this year. The first was awarded by the **International Transport Workers' Federation Seafarers' Trust (ITF)** for the Center to purchase a new van to continue to be the lifeline between ship and shore for seafarers. The second was from the **Longwood Foundation** for completion of Phase II safety upgrades to the Center building, enabling SCW to continue being a safe haven and ***Home Away from Home*** for seafarers.

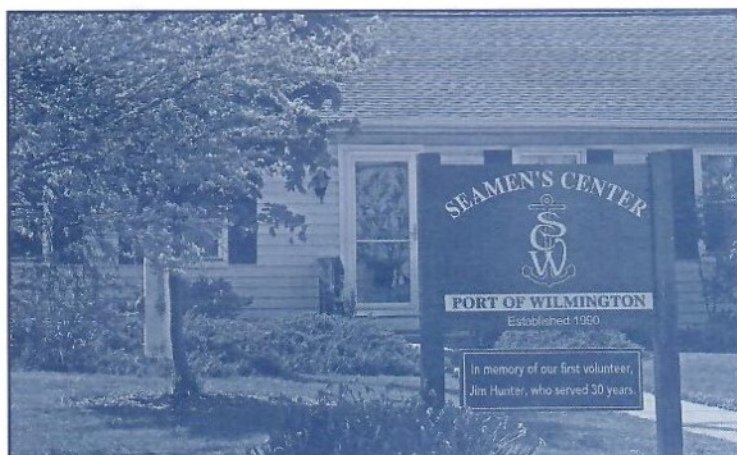
These grants allow SCW to continue to focus the generous donations received from supporters on our mission of greeting and assisting a stranger in a strange land.

Your generosity enabled SCW to pivot our support during the global pandemic, keep our doors open and add the vaccination program. Yes, we are receiving grant money, but we still need your generous donations to keep the Center open during for unforeseen challenges and the challenges of port expansion.

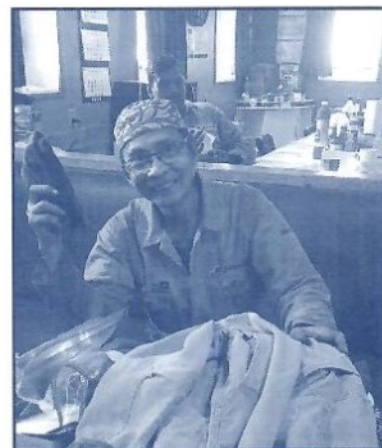
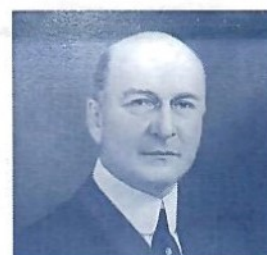
Now more than ever we need your support! Please consider donating.

Thank you.

The Crew of SCW



LONGWOOD *foundation*



WIN FREE TICKETS TO SPORTING EVENTS, CONCERTS, AND ONCE IN A LIFETIME EXPERIENCES BY DONATING TO LOCAL NONPROFIT ORGANIZATIONS!

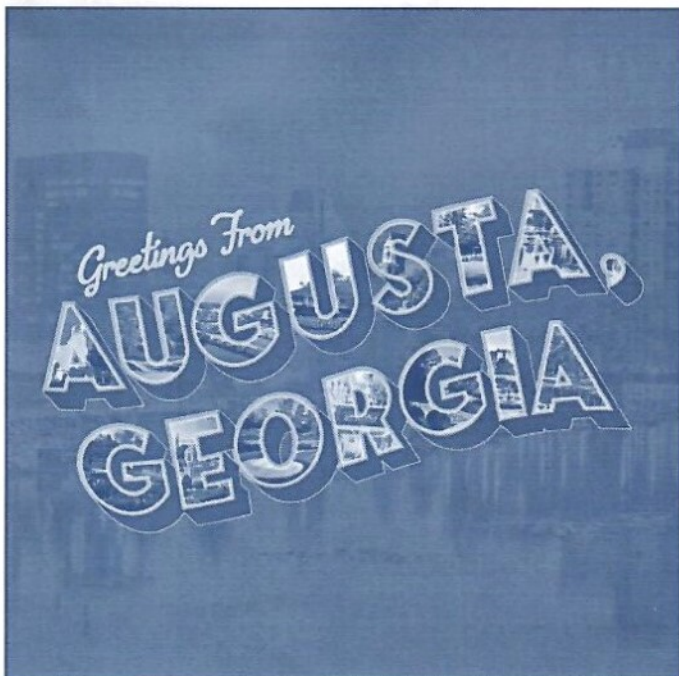
Don't miss this chance to WIN spectacular event tickets through donations!

Since April, SCW supporters with email addresses on file have been receiving opportunities to win wonderful prizes while at the same time donating to the Center. Prizes like

4 Phillies Opening Day tickets in the Hall of Fame Club or 3 floor seats to a 76'ers game. Experiences that SCW would otherwise never have the opportunity to raffle off without the generosity of **Tix for Good**. Tix for Good is an organization that helps you win free tickets while donating to SCW. Upcoming opportunities include Weekend passes to the 2024 Masters in Augusta, GA and The Mike Trout Give Away: 3 first row seats directly next to the Angels dugout at a Phillies game, autographed Mike Trout Jersey, and Bat.



<https://tixforgood.org/#sweepstakes>



THE MIKE TROUT GIVEAWAY!

DONATE AND BE ENTERED TO WIN

- 3 SEATS FOR THE PHILLIES VS ANGELS GAME ON 8/29/23, ROW 1 DIRECTLY NEXT TO THE ANGELS DUGOUT
- A SIGNED MIKE TROUT JERSEY
- A SIGNED MIKE TROUT BAT

Still on the Fence about Sharing your Email Address?



SEAMEN'S CENTER
of WILMINGTON Incorporated
PORT OF WILMINGTON
P.O. BOX 405
WILMINGTON, DE 19899

Non-Profit
Organization
US Postage
PAID
Wilmington, DE
Permit No 2034

ADDRESS SERVICE REQUESTED

Mission Statement

SEAMEN'S CENTER of WILMINGTON Incorporated

The mission of the Seamen's Center of Wilmington, Inc., is to meet the needs of the seafarers who visit the Ports in the State of Delaware. The goal is to make their time in port a rewarding one by providing personal, practical and spiritual assistance. A warm welcome is extended to ease the pain of loneliness and isolation and to offer a respite from the hazards of the sea.